



**CLICK**  **LOCK**® T I L E S

---

*Aristo Collection*



**WELSPUN**  
FLOORING



## CLICK-N-LOCK TILES® - *Aristo Collection*

The lap of royalty at the pinnacle of craftsmanship. The ***Aristo Collection*** of Click-N-Lock tiles® adds exclusivity and distinction to your floor unlike anything you have ever seen. These are the finest of our collections. The feel of exquisiteness and elegance is evident with every look and feel of the Aristo Collection. If Exquisiteness is what you are looking for, then you have arrived at the right place.

Carefully curated with flawless attention to detail, the options in wooden finish of the Aristo Collection is impeccably rich in texture and appears natural, from the way it looks to the way it feels to walk on. And for the contemporary and modern heartbeat in you, the Vogue finish from the Aristo Collection are meticulously selected designs that are leading the modern trend wave today and tomorrow. With shades like Metal and Leather, the Vogue finish will surely make your heart skip a beat. Metal finish from Vogue are all about the rustic, antique and matte. These consist of rustic metal shades which do a perfect job at complementing the modern day décor for a truly upbeat modern space. When it comes to exquisiteness, one can safely say that leather finish is at the forefront of exclusive and premiumness. Now bring the feel of class and sophistication to your floors with the leather finish from Vogue. With never seen before designs, these are created to complement your bold interiors perfectly.

And not just exquisite, but sustainable too. The Aristo Collection is made from recycled content as part of our constant endeavors to give back to planet earth. Exclusive, elegant and sustainable, the Aristo Collection has it all. This collection is the amalgamation of royalty and exclusivity. Truly a masterpiece that makes any space stand out.

## Click N Lock Tiles®

Click-N-Lock Tiles® are a revolution in flooring, thanks to its innovative Wel-Lock™ Technology. It enables the tiles to be laid with minimal effort and expertise in less than a day\*. Aesthetically appealing in multiple finishes, they are highly durable.

The main content in our Click-N-Lock Tiles® is its Stone Polymer Composite (SPC) core. This composition of stone infused with polymer molecules, act as a binding agent, giving us best in class strength and makes the tiles water proof and UV resistant. These tiles are also thin and light without compromising on strength and durability of the locking mechanism.

The lack of any organic material makes our products anti-microbial and termite proof. Also, every one of our Click-N-Lock Tiles® products have recyclable content which makes them sustainable too.

\*- T&C apply

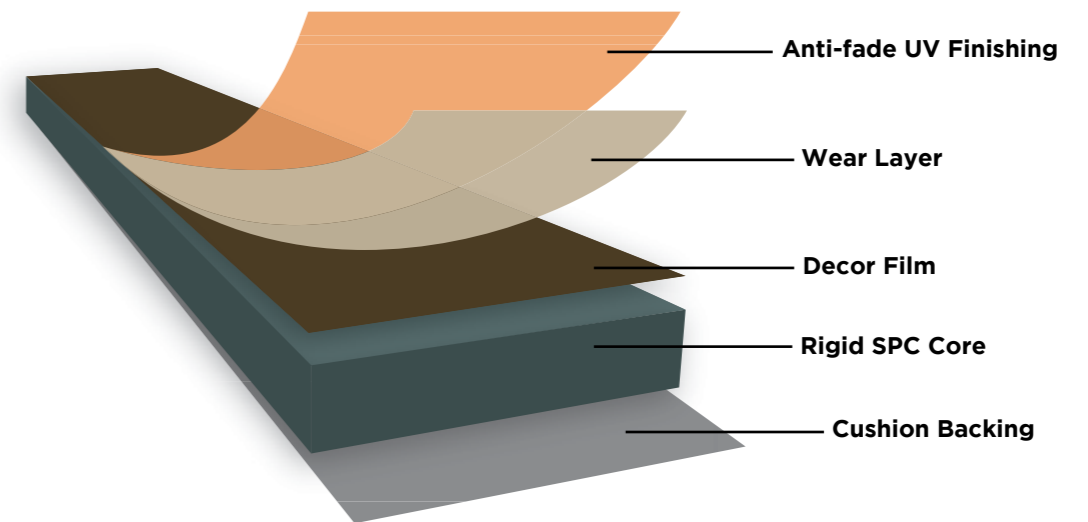


## Structure

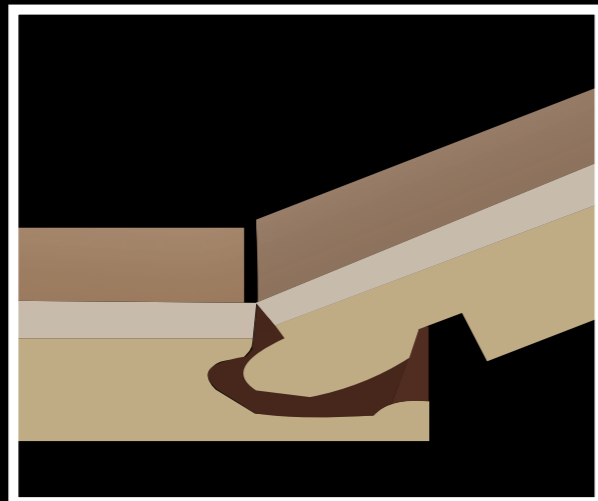
The main contents of Click-N-Lock Tiles® core are polyvinyl chloride, natural limestone and stabilizers. These tiles combine the strength of stone and the beauty of multiple finishes with four layers designed to resist wear and retain a luxurious look for decades.

Click-N-Lock Tiles® features include dimensional stability, waterproofness, indentation resistance against high density core. It can be installed on different types of floor bases - concrete, epoxy and ceramic.

It is perfect for residential and commercial applications.



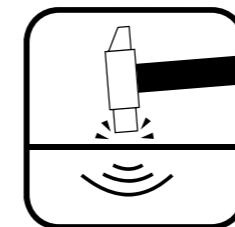
# Wel-Lock™ Technology



Our Click N Lock tiles® come with Wel-Lock™ technology which allows the tiles to fit into one another in a unique locking mechanism. This ensures strong locking at the joints and makes installation a quick and effortless process. It also ensures that you get that beautiful seamless look on the floor. It's not just a lock, its Wel-Lock™ !



# Trademarks & Technologies



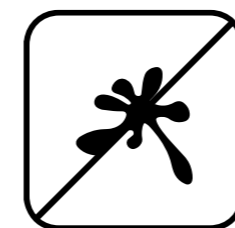
## FloorNdure™

Welspun Flooring's Click-N-Lock Tiles® with FloorNdure™ technology comes with solid durability. It has proven to take on the static weight of a Sports Utility Vehicle weighing 1700 kg without having a blemish on it. Incredible isn't it? With FloorNdure™, our hard flooring really go the distance when it comes to strength and durability. And why not? After all, flooring is where the foundation of a home is.



## ScrapeGuard™

Floors in our homes, go through several everyday scratches and scrapes. Welspun Flooring's ScrapeGuard™ technology uses a layer with UV coating on our Click-N-Lock Tiles®, that offers protection to the design underneath from scratches meanwhile retaining the look and longevity of the tile. So, you can say goodbye to the everyday scratches and scrapes.



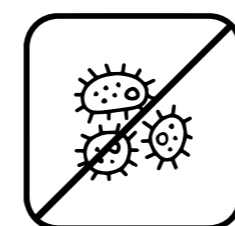
## StainProtect™

Stains and spills are unavoidable on the floors of our homes and some stains can leave behind a permanent mark. But with our StainProtect™ technology, you will leave a lasting impression but not marks. StainProtect™ layer is specially designed to offer superior stain resistance, to keep your floor always clean and sparkling. Now, go and make that splash!



## Cushion Backing

Quiet homes add to our mental comfort & tranquility. With Welspun Flooring's superior backing technology on our Click-N-Lock Tiles®, experience quieter floors. The felt backing applied under the tiles provide acoustic absorption, reducing the feet tapping and enhancing sound insulation. Talk about Zen flooring!



## GermiShield™

Health of our loved ones come first. That is why it is very important that we keep our homes clean and germfree. To fight against these invisible forces of nature, Welspun Flooring's Click-N-Lock Tiles® come with innovative GermiShield™ technology, which restricts the growth of harmful germs or molds on the floor. Healthy homes, begin with healthy floors.

# Why Click N Lock Tiles® ?

 Can be installed on existing floors	 Less than a day installation	 Mix & Match	 Water Proof
 Stain Protect™	 Scrape Guard™	 Fire Resistant	 Termite Proof
 Weather Proof*	 Dust Free Installation	 Glue Free	 Green Product
 Hassle Free Logistics	 Easy to Carry	 Recyclable	 Less Dead Weight

Certified by



# Welspun Advantages

**1**



*Less than a day installation*



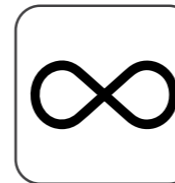
*Made in India*

**2**

**3**



*Noise & Dust free installation*

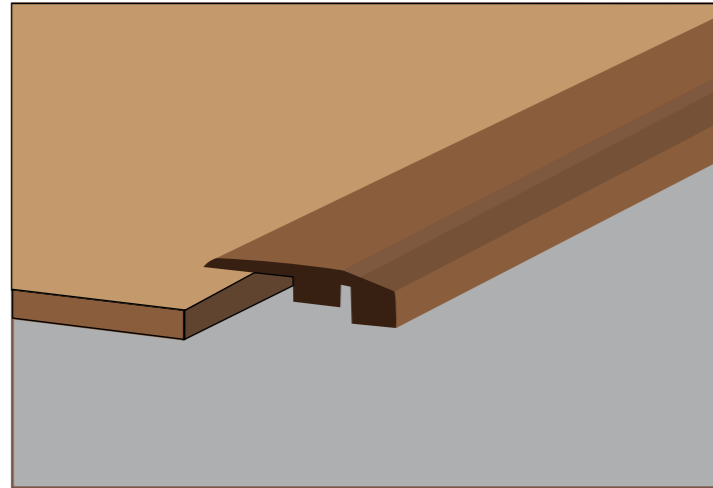


*Seamless Look*

**4**

# Welspun Accessories

Seamless Finish for your Click-N-Lock Tiles® Flooring



If you are looking for the perfect accessory to complement your floor, then look no further. Welspun Flooring's accessory range is carefully crafted to match any design of Click-N-Lock Tiles®. These accessories are as beautiful as they are durable. They come with a wide range of colors and shades to enhance the look of your tiles to a whole new level.

A class apart, these accessories always create the perfect finish for Click-N-Lock Tiles® to make your floor look like a masterpiece. Capturing the sleek and shine of metal perfectly, our metal accessories are sure to give a lustrous look that is meant to last long.

The primary types of accessories are Reducer, T-Molding, Skirting and Quarter Round.

(\* Please contact our team for more details on metal accessories)

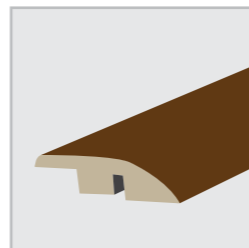
## Alluminium T Moulding

Made from aluminum, the T-Molding accessories are designed to join two different tiles together.



## Alluminium Reducer

Used to join two edges of unequal heights, these aluminum reducers do the perfect job in joining the tiles to the base floor seamlessly.



## Skirting

To create beautiful transitions from the tile edge to the floor, Skirting are made from Stone Polymer Composite and comes in over 11 solid colors.

**Size:** 80mm (W) x 12mm (H)



### Available in colours:

AC: HFSK00001 Colour: Almond Milk	AC: HFSK00002 Colour: Brilliant White	AC: HFSK00003 Colour: Croissant	AC: HFSK00004 Colour: Vapor Blue
AC: HFSK00005 Colour: Cashew	AC: HFSK00006 Colour: Flint Gray	AC: HFSK00007 Colour: Tiger's Eye	AC: HFSK00008 Colour: Falcon
AC: HFSK00009 Colour: Cashew	AC: HFSK00010 Colour: Anthracite	AC: HFSK00011 Colour: Black	

## Quater Round

Created from Stone Polymer Quarter Rounds come in over 11 solid colors. They are used to join the edges of the floor to the wall.

**Size:** 28mm (W) x 15mm (H)



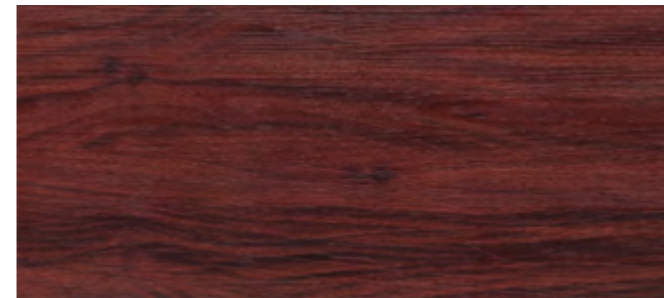
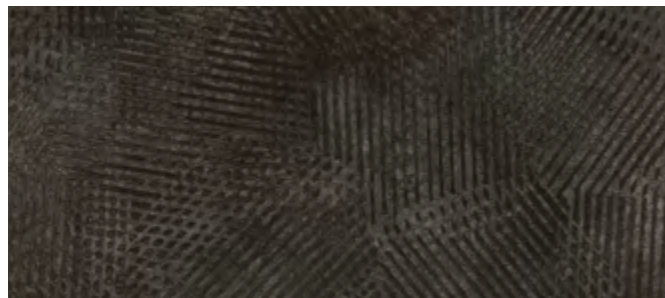
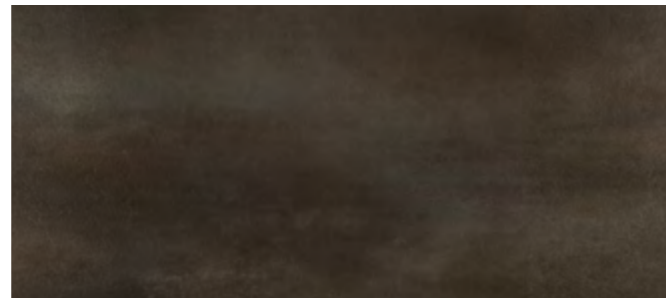
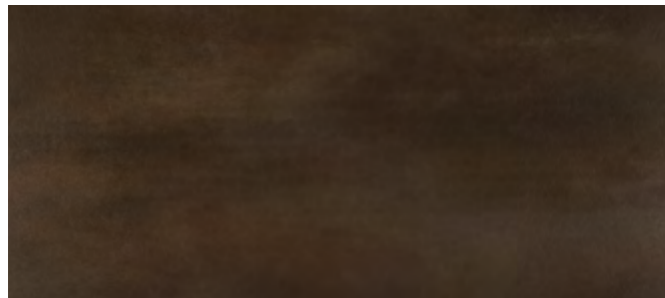
### Available in colours:

AC: HFQR00001 Colour: Almond Milk	AC: HFQR00002 Colour: Brilliant White	AC: HFQR00003 Colour: Croissant	AC: HFQR00004 Colour: Vapor Blue
AC: HFQR00005 Colour: Cashew	AC: HFQR00006 Colour: Flint Gray	AC: HFQR00007 Colour: Tiger's Eye	AC: HFQR00008 Colour: Falcon
AC: HFQR00009 Colour: Cashew	AC: HFQR00010 Colour: Anthracite	AC: HFQR00011 Colour: Black	

***An Overview***

*Vogue Finish*

*Wood Finish*

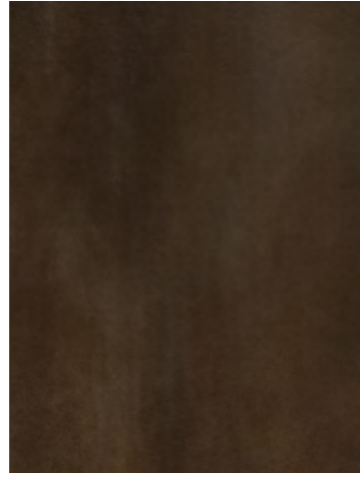


**Thickness** 5mm  
**Wear Layer** 0.5mm  
**Cushion Backing** 1mm  
**Tile/Plank Sizes** Vogue: 18"x36"

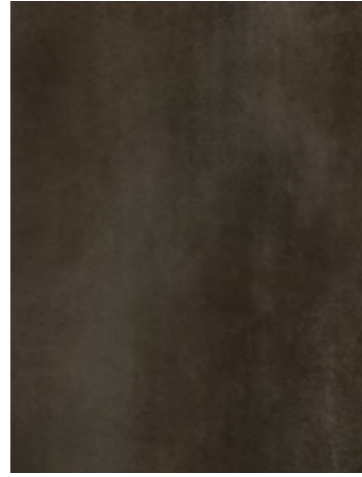
**Emboss** Regular Emboss,  
Deep Emboss, Natural Emboss.  
**Bevel** Micro Bevel  
**No.of planks/box** 4 planks/box | 18.08 sqft/box



AC: HF000103 (18x36)  
Design: Clay Mirage



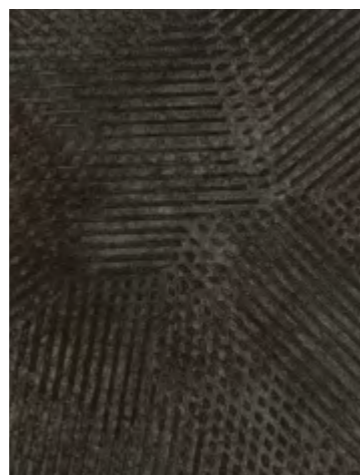
AC: HF000452 (18x36)  
Design: Ember Sky



AC: HF000453 (18x36)  
Design: Winter Sky



AC#HF000455 (18x36)  
Design: Tarnished Metal



AC: HF000454 (18x36)  
Design: Groove Interrupted



AC: HF000101 (18x36)  
Design: Depot



AC: HF000454  
Design: Groove Interrupted







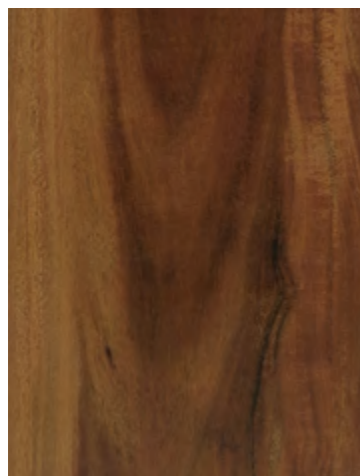






**Thickness** 5mm  
**Wear Layer** 0.5mm  
**Cushion Backing** 1mm  
**Tile/Plank Sizes** Wood: 5.78"x36", 8.86"x48"

**Emboss** Regular Emboss,  
 Deep Emboss, Natural Emboss.  
**Bevel** Micro Bevel  
**No.of planks/box** 12 planks/box | 17.35 sqft/box (5.78"x36")  
 7 planks/box | 20.66 sqft/box (8.86"x48')



AC: HF000517 (5.78"x36"),  
 HF000550 (8.86"x48")  
 Design: Rosid



AC: HF000518 (5.78"x36"),  
 HF000551 (8.86"x48")  
 Design: Java Wood



AC: HF000519 (5.78"x36"),  
 HF000552 (8.86"x48")  
 Design: Whisker Oak



AC: HF000520 (5.78"x36"),  
 HF000553 (8.86"x48")  
 Design: Carolina cherry



AC#HF000521 (5.78"x36"),  
 HF000554 (8.86"x48")  
 Design: Luisiann Laurel



AC: HF000520  
 Design: Carolina Cherry





AC: HF000519  
Design: Whisker Oak







AC#HF000521  
Design: Luisiann Laurel


## Testing Reports

Standard Test	Description
ASTM F1700-13 (F3261 SPC)	SPC Solid Polymeric Core
ASTM F386-11	Thickness of the Core
ASTM 925	Stain and Chemical Resistance
ASTM F1514	Heat Stability
ASTM F1515	Light Stability
ASTM F1914	Short-Term Indentation and Residual Indentation
ASTM F2421	Size and Squariness
ASTM E648	Critical Radiant Flux /NFPA (Fire protection) Classification
ASTM E662	Optical Density of Smoke Generated by Solid Materials (NFPA 258)
ASTM C1028	Slip Resistance (Static Coefficient of Friction by the Horizontal Dynamometer Pull-Meter Method)
EN13329	Large ball impact
EN13329	Small ball impact
EN13329	Abrasion Resistance
NALFA 3.4	Stain/Cleanability
Mirco scratch EN 16094: 2012	Scratch Resistance
ASTM F2753	Effect of Rolling load
AATCC 134	Electrostatic Propensity
ASTM D4060	Abrasion Resistance with S42 wheel
ASTM F510	Abrasion Resistance with S39 wheel
EN ISO 24343-1:2012	Static indentation
ASTM F1265	Resistance to impact
EN 438-2:2016	Stain test
Accelerated Wear Test by Sim Floor Machine	Chair Leg Test
Impact Insulation Class	Acoustic Property
Sound Transmission Class	Acoustic Property



---

To transform your flooring, just get in touch with us:

 Toll free : 1800 120 1161

 Website : [www.welspunflooring.com](http://www.welspunflooring.com)