



Step up your  
Style quotient!

**ASCEND**  
STEP TILES



# INDEX

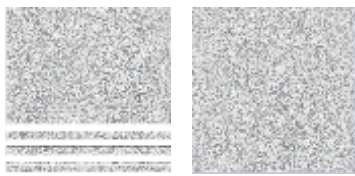
STEP, LANDING & RISER TILES

**300x300 mm**



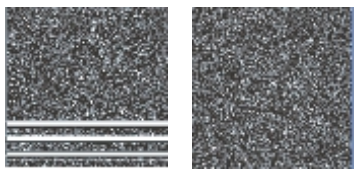
*HSP Step Oak Wood*  
*HLP Level Oak Wood*

**01**



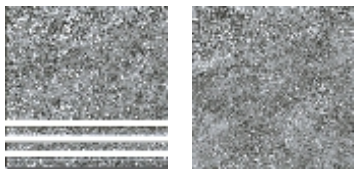
*HSP Step Granite Grey*  
*HLP Level Granite Grey*

**02/03**



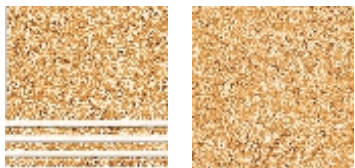
*HSP Step Granite Black*  
*HLP Level Granite Black*

**03/05**



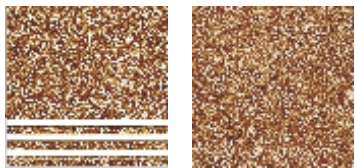
*HSP Step Granite Grey*  
*HLP Level Charcoal Grey*

**06**



*HSP Step Nebula Beige*  
*HLP Level Nebula Beige*

**07**



*HSP Step Nebula Brown*  
*HLP Level Nebula Brown*

**08/09**



*HSP Step Mosaic Chips*  
*Nebula Sandune*  
*Nebula Multi*

**10**

## Application Areas



SCHOOL HOSPITAL OFFICE HOME HOTEL STORES COLLEGE MALL



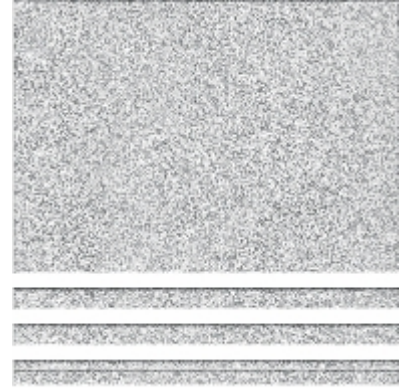
HLP Level Oak Wood



HSP Step Oak Wood

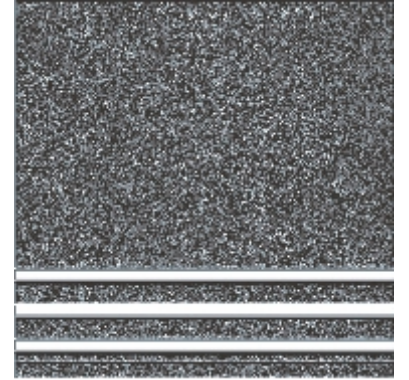


HLP Level Granite Grey

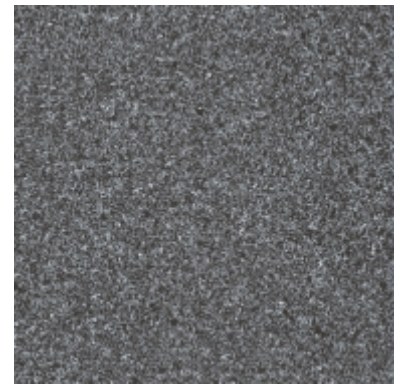


HSP Step Granite Grey

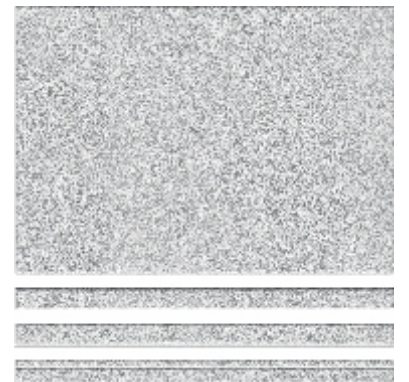




HSP Step Granite Black



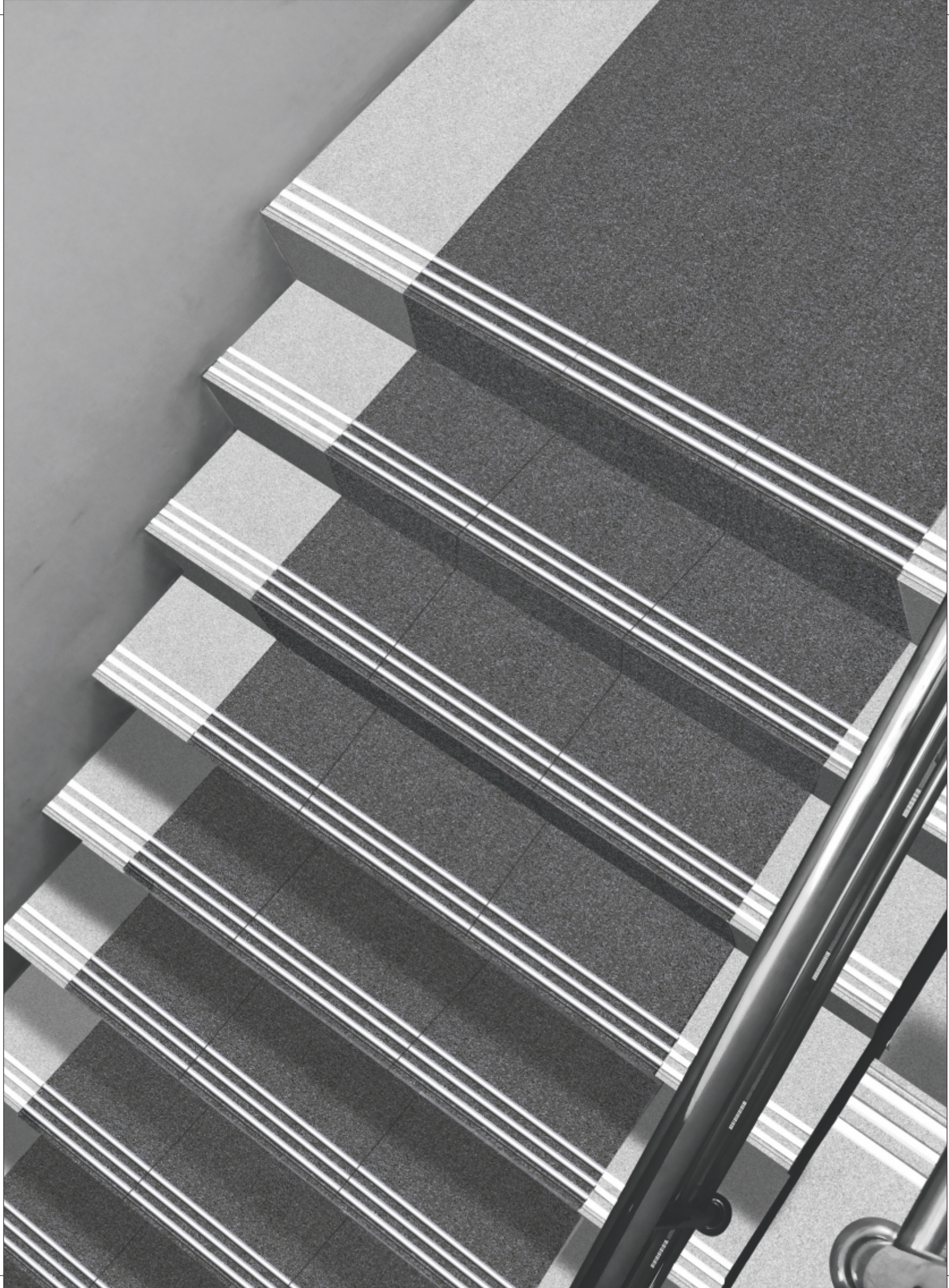
HLP Level Granite Black

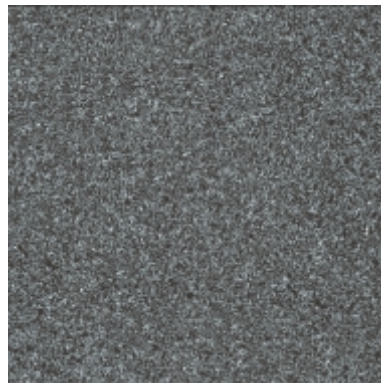


HSP Step Granite Grey

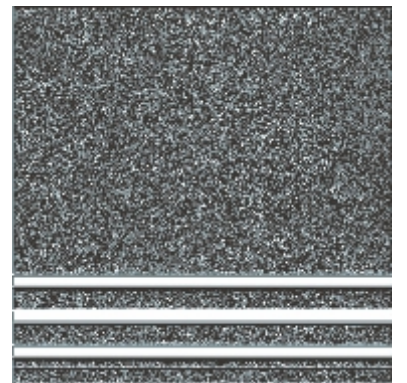


HLP Level Granite Grey



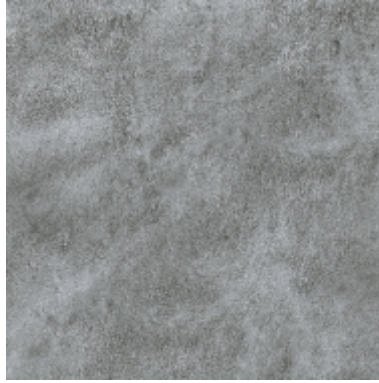


HLP Level Granite Black

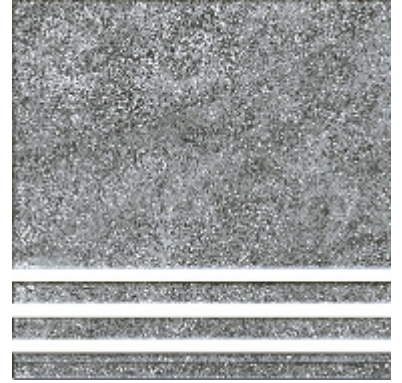


HSP Step Granite Black





HLP Step Charcoal Grey



HSP Step Charcoal Grey





HLP Level Nebula Beige



HSP Step Nebula Beige



HLP Level Nebula Brown



HSP Step Nebula Brown





HLP Level Nebula Brown



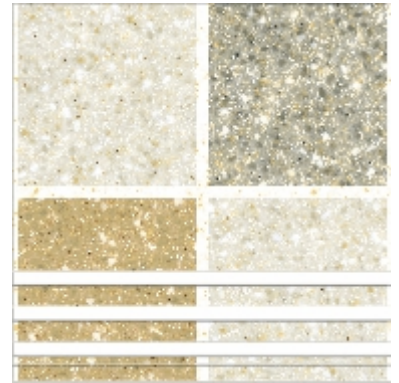
HSP Step Nebula Brown



Nebula Multi



Nebula Sandune

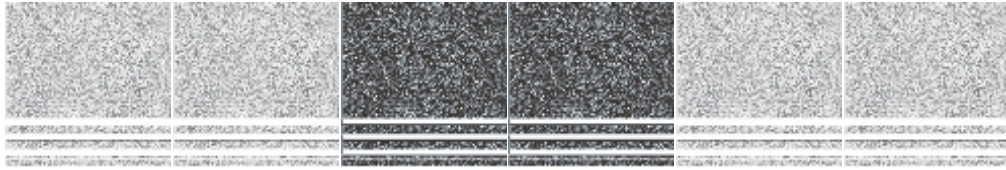


HSP Step Mosaic Chips

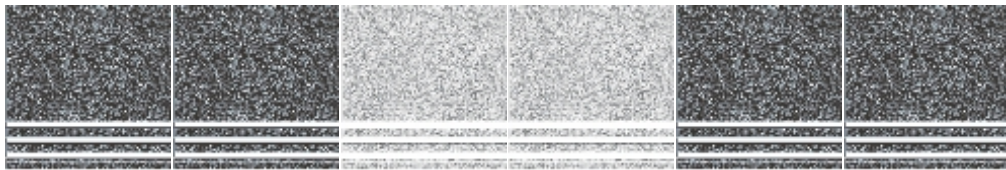


# PLAY WITH COMBINATIONS

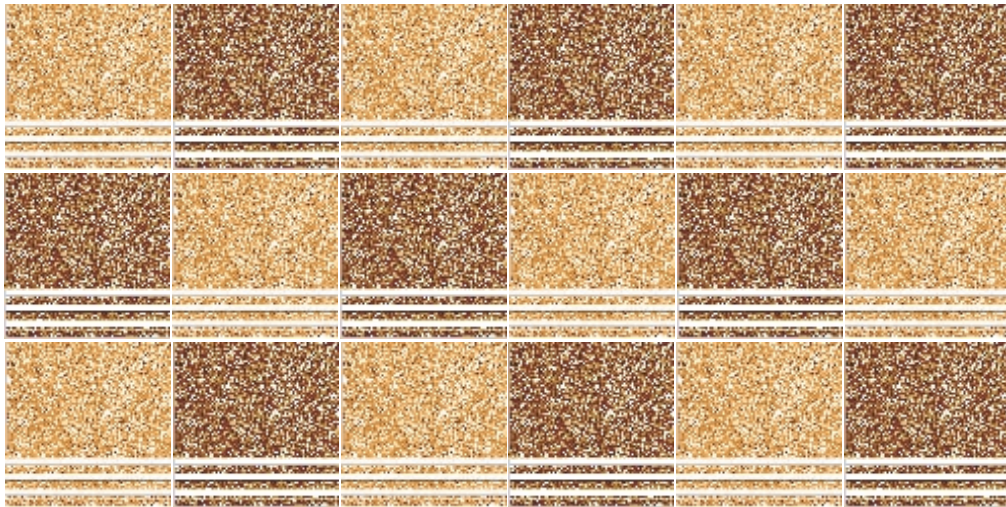
*Option-1*



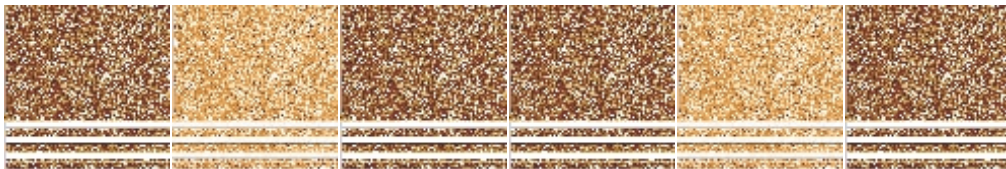
*Option-2*



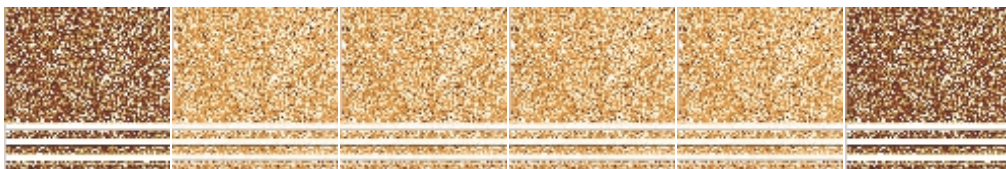
*Option-3*



*Option-4*



*Option-5*



# TECHNICAL SPECIFICATIONS Step, Landing & Riser Tiles



Packing Details			
Size ( In mm. )	No. of Tiles Per Carton	Covered Area Per Carton	
		( In Sq. Mtr. )	( In Sq. Ft. )
300x300	10	0.9	9.68

Group B Ia as per ISO 13006:2012 and Group B Ib as per IS 15622:2017					
Characteristics	Test Methods	Requirement as per ISO 13006 ≤ 0.5 Group B Ia	Requirement as per IS 15622:2017 0.08<E ≤ 3% Group B Ib		OBL Norms
			Unrectified	Rectified	
<b>Dimension &amp; Surface Quality</b>	IS 13630 (Part 1):2006				
Deviation in Length & Width		± 0.60 %	± 0.4 %	± 0.1 %	± 0.10 %
Deviation in Thickness		± 5.0 %	± 5.0 %		± 4.0 %
Straightness of Sides		± 0.5 %	± 0.3 %	± 0.1 %	± 0.10 %
Rectangularity		± 0.6 %	± 0.3 %	± 0.1 %	± 0.10 % 😊😊
Surface Flatness		± 0.5 %	± 0.5 %		± 0.2 %
Surface Quality		Min. 95 % tiles should be free from visible defects	Min. 95 % tiles should be free from visible defects		Conforms 😊😊
<b>Physical Properties</b>					
Water Absorption	IS 13630 (Part 2):2006	Avg ≤ 0.5%, Individual 0.6 max	Avg 0.08<E ≤ 3, Individual 3.3, Max		Av < 3%
Modulus of Rupture in [N/mm <sup>2</sup> ]	IS 13630 (Part 6):2006	Avg 35, Individual 32, Min	Avg 30, Individual 27, Min		> 35 😊😊
Breaking Strength in N	IS 13630 (Part 6):2006	1300	< 7.5 mm thickness: 700, Min ≥ 7.5 mm thickness: 1100, Min		1500 Min 😊😊
Moisture Expansion in mm/m	IS 13630 (Part 3):2006	Test Method Available	0.02, Max		Conforms 😊😊
Scratch Hardness of Surface (Mohs)	IS 13630 (Part 13):2006	N.A	5, Min		5-8 depends on surface 😊😊
Resistance to Surface Abrasion of glazed tiles (Class I to V)	IS 13630 (Part 11):2006	Report Abrasion Class & Cycle Passed	Class II, Min		3-5 as per design/surface
Co-efficient of Linear Thermal Expansion from ambient temperature to 100°C	IS 13630 (Part 4):2006	Test Method Available	7x10 <sup>-6</sup> K <sup>-1</sup> , Max		Conforms
Thermal Shock Resistance	IS 13630 (Part 5):2006	Test Method Available	10 cycles, Min		Passed
Crazing Resistance	IS 13630 (Part 9):2006	Required	4 Cycles@7.5 bar, Min		Passed
Frost Resistance	IS 13630 (Part 10):2006	Required	Required		Resistance
Impact resistance- Coefficient of restitution	IS 13630 (Part 14):2006	NA	0.55, Min		Conforms
<b>Chemical Properties</b>					
Stain Resistance	IS 13630 (Part 8):2006	Test Method Available	Class I, Min		Min. Class-1
Resistance to household chemicals		Min.UB	Class AA, Min		Min. Class-AA
Resistance to acids and alkalis (with exception of hydrofluoric acid and its compounds)		Test Method Available	Required, if agreed		Required, if agreed

NOTE: Certain amount of Size and Shade variation is inherent in all ceramic products. Within the limits of printed material, the colors and aesthetics of the products correspond closely to those of illustrated products. Prospective customers are advised to inspect a sample of the tile before ordering and laying. At all points of time, the company liability is restricted to the purchase value of tiles.

Every effort has been made to ensure the accuracy of the information given. However, the company reserves the right to delete & change, any of the items, colors, sizes & technical specifications without any prior notice.

**Make small spaces  
look bigger  
with Orientbell tiles**

**Big solutions for small bathrooms**



**orientbell**  
tiles

WhatsApp : 87507 11111 | Missed Call : 87507 33333

Listed on BSE (530365) for 20+ years.  
And also on NSE (ORIENTBELL).

CORPORATE OFFICE:

Iris House, 16 Business Centre,  
Nangal Raya, New Delhi – 110046, India  
Tel: +91-11-47119100

REGISTERED OFFICE:

8 Industrial Area, Sikandrabad – 203 205 (UP), India  
Tel: +91-5735-222-203 / 424, +91-8191004575 / 76



[www.orientbell.com](http://www.orientbell.com)

CIN: L14101UP1977PLC021546

